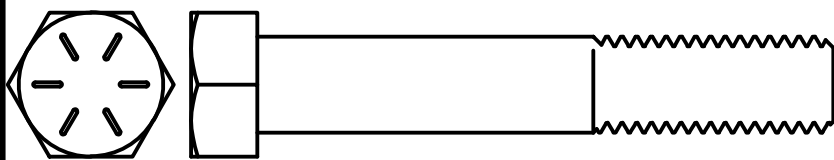
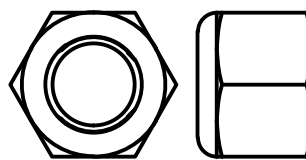


FRONT LOWER CONTROL ARM

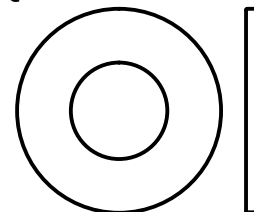
ITEM 1
 HHCS - 1/2-13 x 3.00", GRADE 8
 QTY: 2 PER ASM



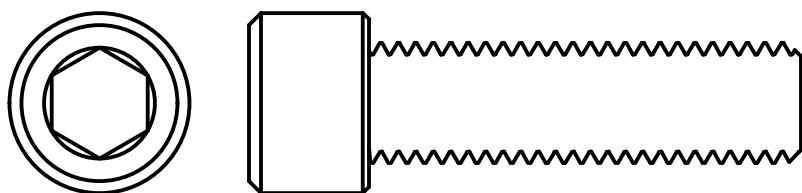
ITEM 2
 NYLON LOCK NUT
 1/2-13, GRADE 8
 QTY: 2 PER ASM



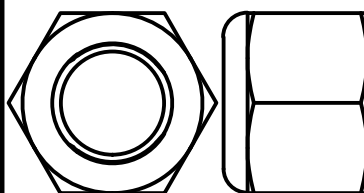
ITEM 3
 WASHER
 1/2, GRADE 8, SAE
 QTY: 4 PER ASM



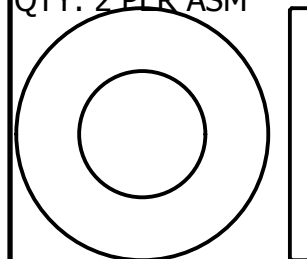
ITEM 4
 SHCS - 5/8-11 x 2.25", ALLOY
 QTY: 2 PER ASM



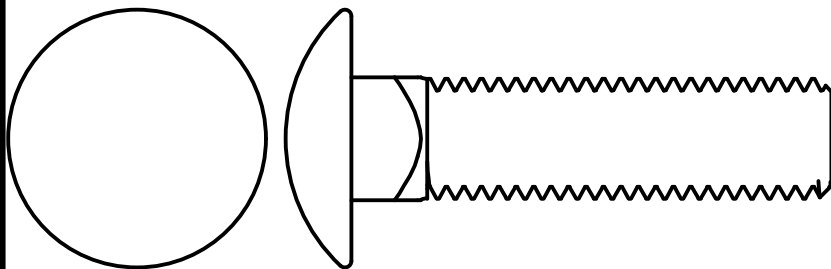
ITEM 5
 NYLON LOCK NUT
 5/8-11, GRADE 8
 QTY: 4 PER ASM



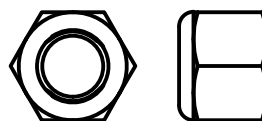
ITEM 6
 WASHER
 5/8, GRADE 8, SAE
 QTY: 2 PER ASM



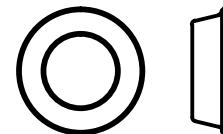
ITEM 7
 CARRIAGE BOLT - 5/8-11 x 2.50" QTY: 2 PER ASM



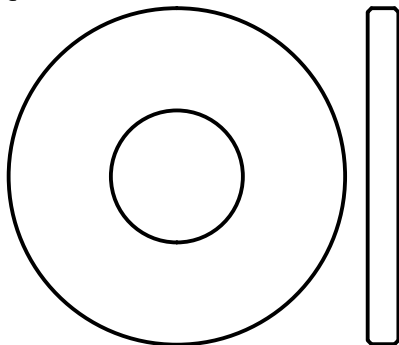
ITEM 8
 NYLON LOCK NUT
 3/8-16, GRADE 8
 QTY: 2 PER ASM



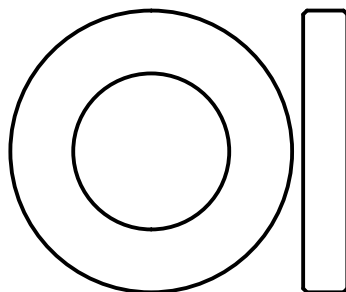
ITEM 9
 ROD END SPACER
 STEEL 3/8 BORE
 QTY: 2 PER ASM



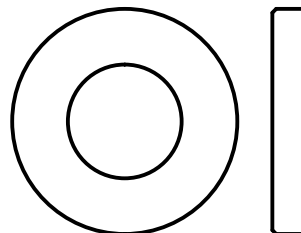
ITEM 10
 WASHER
 5/8, GRADE 8, SAE
 QTY: 2 PER ASM



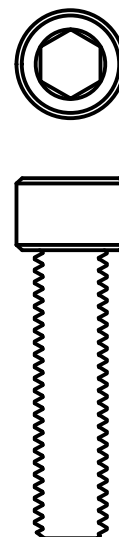
ITEM 11
 WASHER - THICK
 3/4, GRADE 8, SAE
 QTY: 2 PER ASM



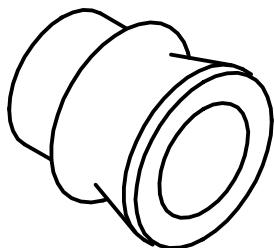
ITEM 12
 WASHER - THICK
 9/16, GRADE 8, SAE
 QTY: 4 PER ASM



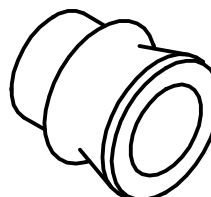
ITEM 13
 SHCS
 3/8-16 x 1.50"
 QTY: 2 PER ASM



ITEM 14
 HMS - 3/4 TO 9/16
 QTY: 4 PER ASM



ITEM 15
 HMS - 5/8 TO 1/2
 QTY: 4 PER ASM



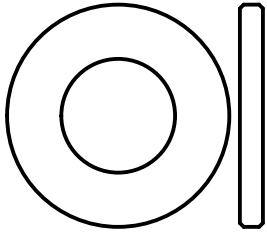
FRONT LOWER CONTROL ARM

S130 - 280ZX

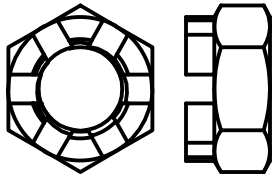
ASSEMBLED / INCLUDED ITEMS - **NOT TO SCALE**

PAGE 2 OF 2

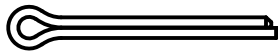
ITEM 16
WASHER
9/16, GRADE 8, SAE
QTY: 2 PER ASM



ITEM 17
CASTLE NUT - 1/2-20
QTY: 2 PER ASM



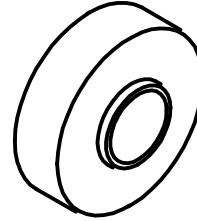
ITEM 18
COTTER PIN
QTY: 2 PER ASM



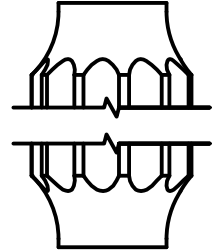
ITEM 19
SET SCREW
QTY: 2 PER ASM



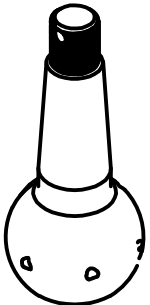
ITEM 20
ALUMINUM STEP
WASHER
QTY: 2 PER ASM



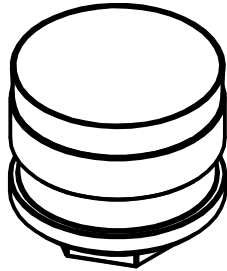
ITEM 21
TURNBUCKLE
9" LONG
QTY: 2 PER ASM



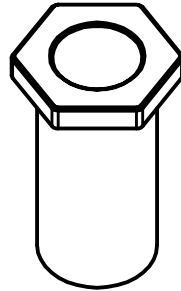
ITEM 22
S130 BALL JOINT
QTY: 2 PER ASM



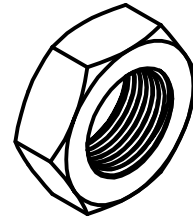
ITEM 23
BALL JOINT END CAP
QTY: 2 PER ASM



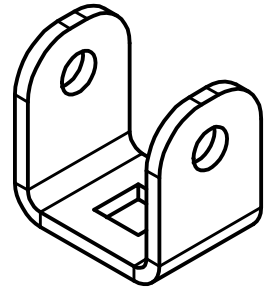
ITEM 24
ADJUSTER NUT
QTY: 2 PER ASM



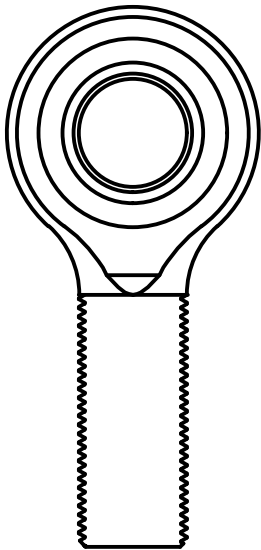
ITEM 25
JAM NUT
1-14 RH, GRADE 5
QTY: 2 PER ASM



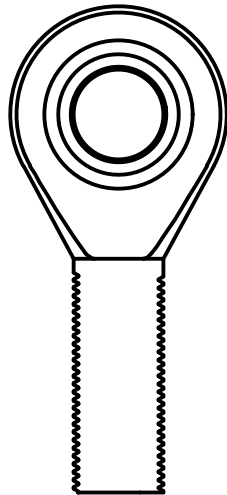
ITEM 26
U BRACKET
QTY: 2 PER ASM



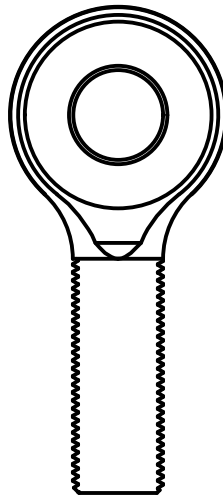
ITEM 27
ROD END
3/4-16 LH x 3/4 BORE
QTY: 2 PER ASM



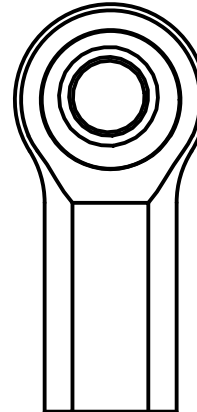
ITEM 28
ROD END
5/8-18 LH x 5/8 BORE
QTY: 2 PER ASM



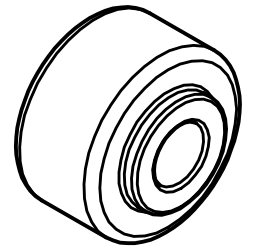
ITEM 29
SOLID EYE
5/8-18 RH x 5/8 BORE
QTY: 2 PER ASM



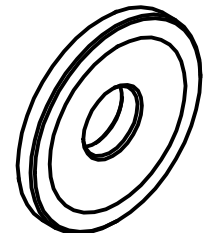
ITEM 30
ROD END
3/8-24 RH x 3/8 BORE
QTY: 2 PER ASM



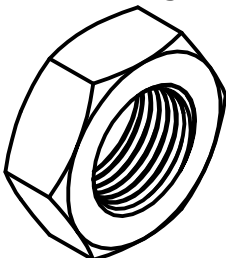
ITEM 31
SWAY BAR BUSHINGS
3/8" ID
QTY: 4 PER ASM



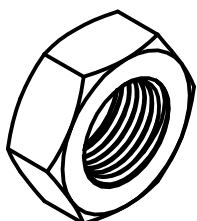
ITEM 36
SWAY BAR BUSHINGS
3/8" ID
QTY: 4 PER ASM



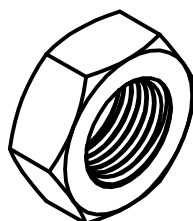
ITEM 32
JAM NUT
3/4-16 LH, GRADE 5
QTY: 2 PER ASM



ITEM 33
JAM NUT
5/8-18 RH, GRADE 5
QTY: 2 PER ASM



ITEM 34
JAM NUT
5/8-18 LH, GRADE 5
QTY: 2 PER ASM



ITEM 35
HHCS - 3/8-24 x 2.50"
GRADE 8
QTY: 2 PER ASM



ITEM 37
JAM NUT
3/8-24 RH, GRADE 5
QTY: 2 PER ASM

